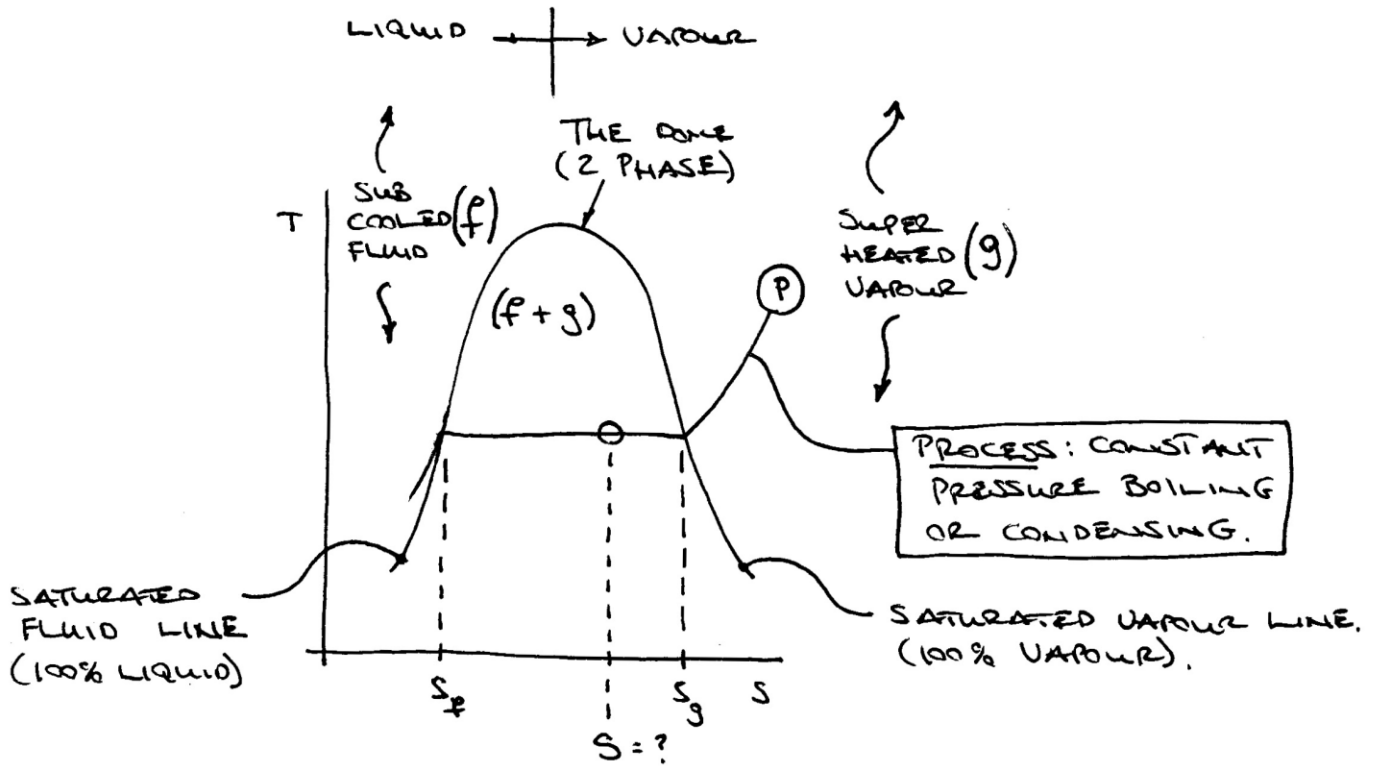


Now lets take a detailed look a The Working Fluid



UNDER THE 'DOME' ...

$S = S_f + x (S_g - S_f) \rightarrow$ ENTROPY	
$h = h_f + x (h_g - h_f) \rightarrow$ ENTHALPY	
WHERE: $x = \frac{m_{\text{VAPOUR}}}{m_{\text{TOTAL}}} = \frac{m_{\text{VAPOUR}}}{m_{\text{LIQUID}} + m_{\text{VAPOUR}}}$	
$x = 0\%$ (ALL LIQUID)	$x = 100\%$ (ALL VAPOUR)

LOOK UP THE VALUES OF S & h IN TABLES

FOR H_2O :

TABLE A-4, Pg. 980: SATURATED WATER - TEMPERATURE

TABLE A-5, Pg 982: SATURATED WATER - PRESSURE

TABLE A-6, Pg. 984: SUPERHEATED

TABLE A-7, Pg 988: COMPRESSED LIQUID
(NOT ALL THAT USED).