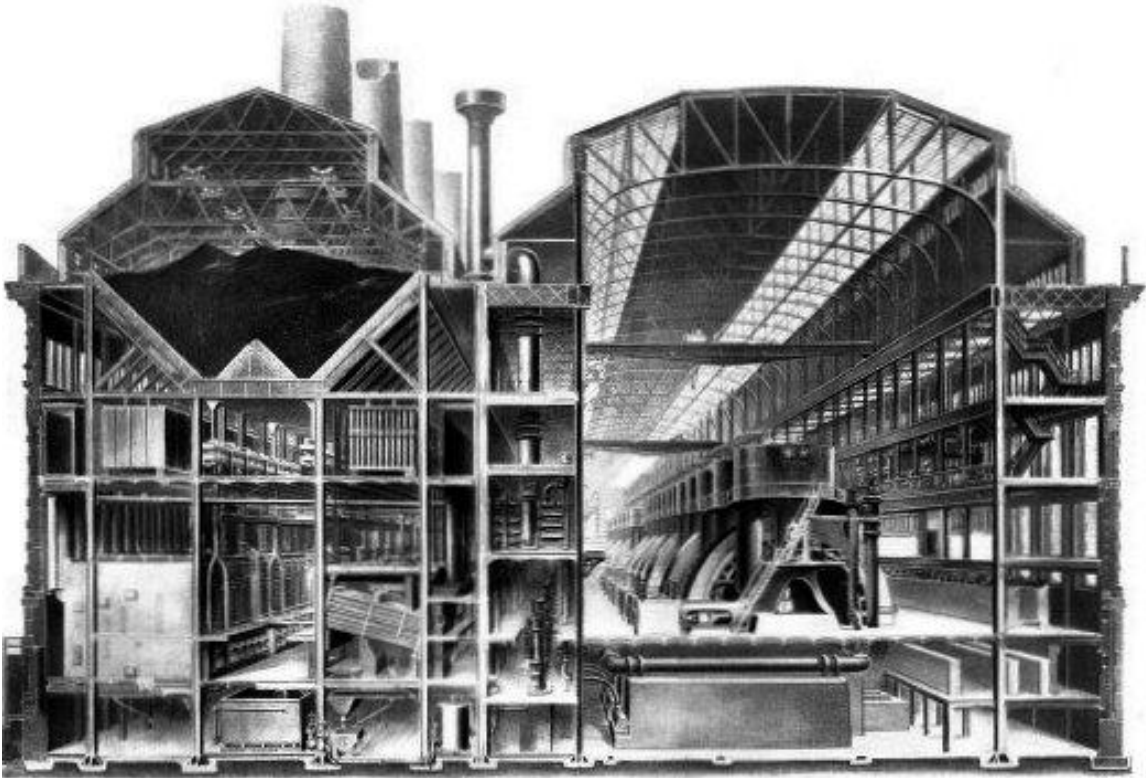
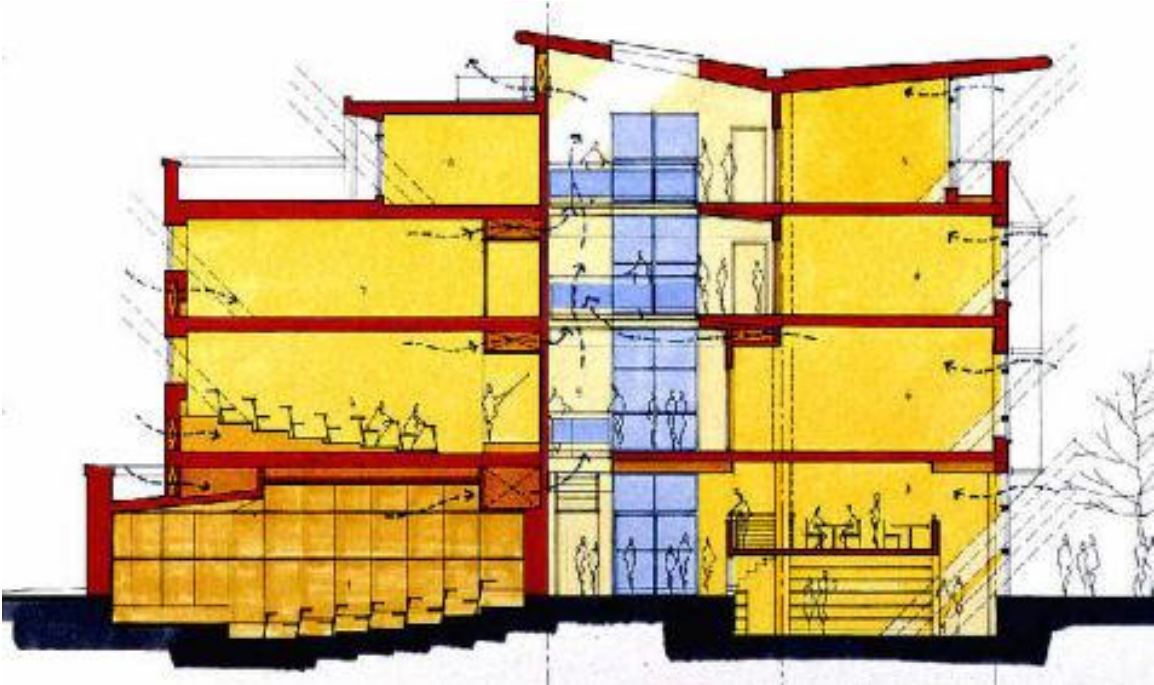
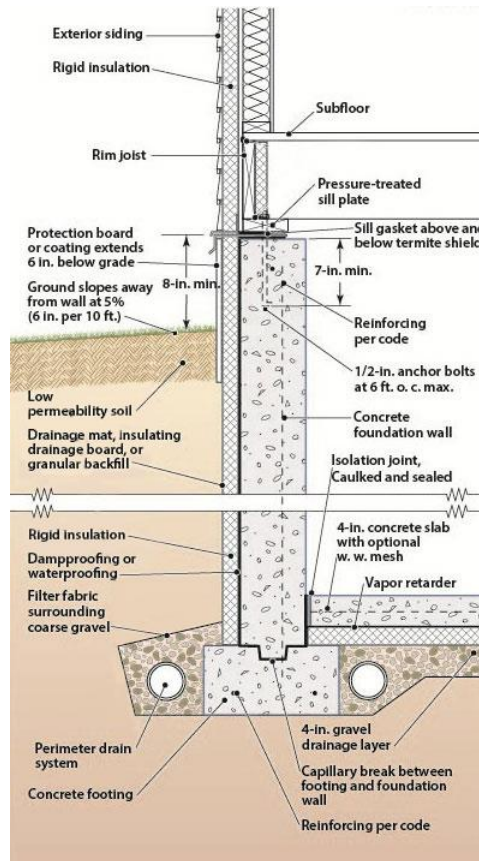
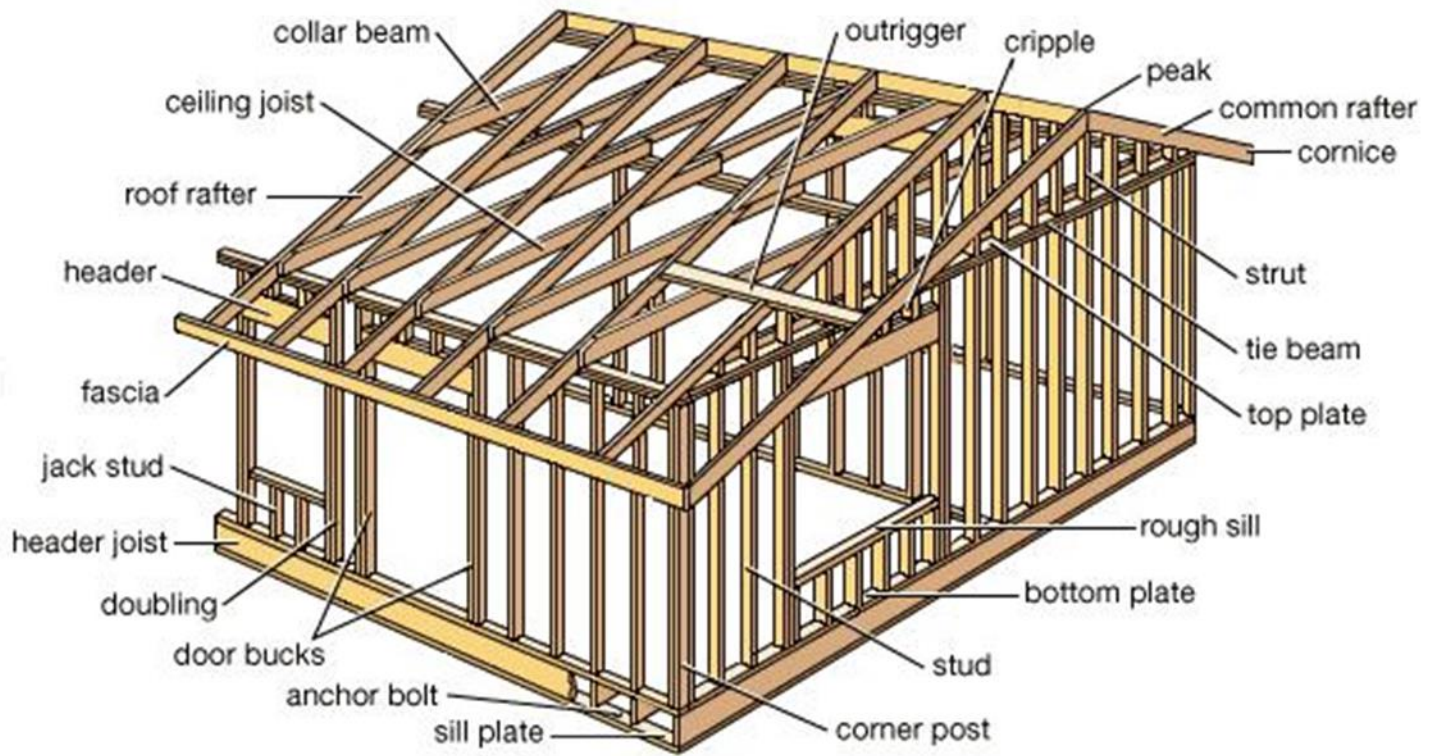
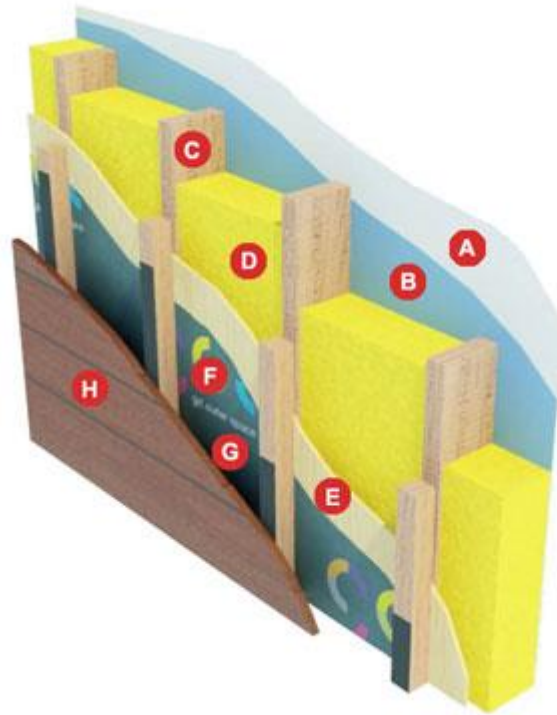


# Building Wall and Foundation Construction





Typical Wall Construction



**A. 12.5mm plain inner lining of plasterboard taped and jointed**

- Provides a clean smooth finished surface on the inside face of the wall
- Allows paint to be applied directly
- Also provides fire resistance to the structure

**B. 500 gauge polythene vapour barrier**

- Prevents moisture created in your living space entering the timber frame area

**C. 140x38mm structural timber frame at 600mm centres**

- Kiln dried, stress graded and pressure treated timber
- This is the engineered structural frame that provides the structural fabric of the building

**D. 140mm thick insulating material**

- Non-combustible insulation
- Provides excellent energy efficiency to the building

**E. 9mm OSB3 sheathing board**

- Provides the timber frame structure with racking resistance

**F. Waterproof breather membrane**

- Allows moisture from inside the frame dissipate into the cavity
- Prevents water from the outside entering the frame

**G. 50 mm clear cavity**

- Provides a clear space for air circulation
- Allows for ventilation between the timber frame and the external leaf

**H. 150mm wide external timber cladding**

- Vertical/horizontal profiled cladding available in western red cedar or douglas fir
- Cladding available in a choice of different colours